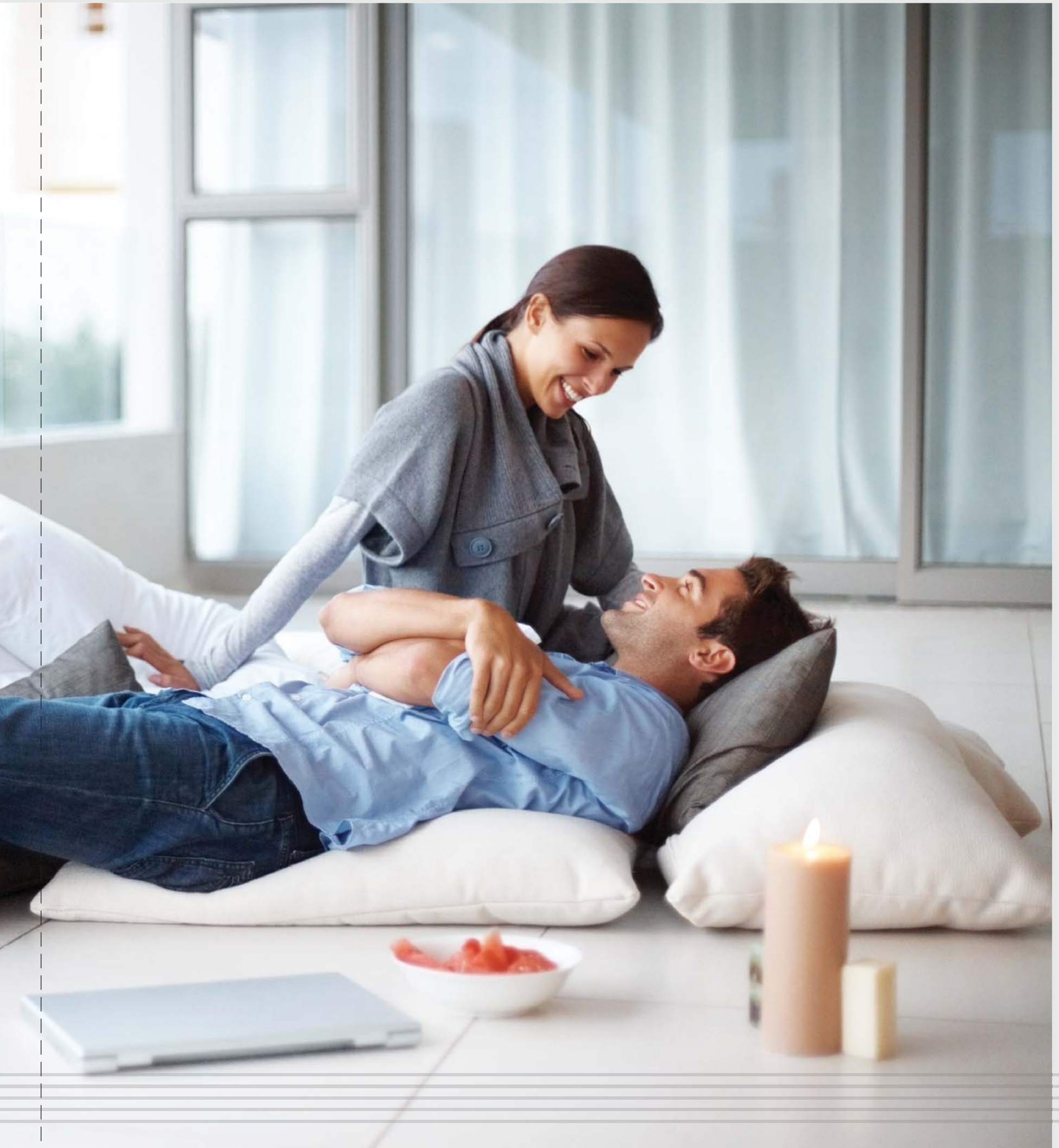


GUI||EMARD
S U I T E S



BASK IN UNPARALLELED LEVELS OF STYLE AND COMFORT





Experience life in the fast lane while enjoying all the pleasures that a luxury home can offer. You will find this synergy coming alive at Guillemard Suites, a stellar new residential development located in Singapore's vibrant east. Here, a bold and gallant facade plays host to a variety of prestigious homes that will suit your busy and varied lifestyle. From beautifully-designed interiors to multiple facilities, Guillemard Suites has what a discerning individual like you is looking for in a home and more.



TAKE YOUR INDULGENCES TO NEW HEIGHTS



Eastern Singapore has always been an enclave of style and prestige and Guillemard Suites is a well-suited addition to this scene. From world-class shopping to eclectic cuisine, this part of the island has never failed to impress with the depth and breadth of choices available. With easy access to public transport and so many facilities located in and around the neighbourhood, it is always a cinch to pamper yourself with whatever you desire.



3 mins
Aljunied MRT
station



4 mins
Mountbatten
MRT station



6 mins
Sport Hub



15 mins
East Coast Park

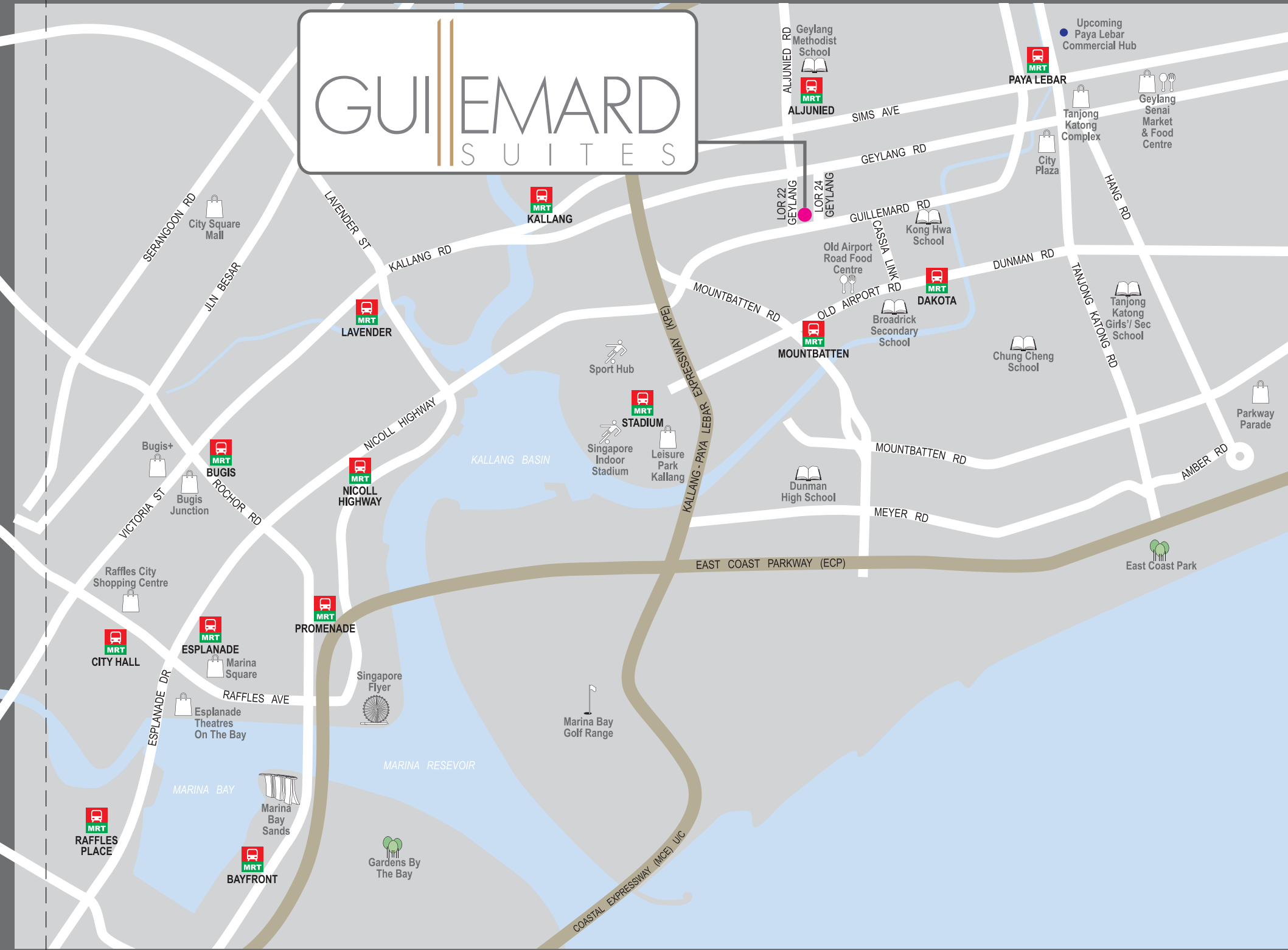


1 MRT Stop
Paya Lebar
Business Hub



8 Mins
Parkway Parade
Shopping Mall

GUIEMARD SUITES



5 mins
Nicoll Highway



7 mins
East Coast Parkway



8 mins
Singapore Flyer



10 mins
Gardens By the Bay



Within 1km
Kong Hwa School



4 MRT Stops
City Hall Interchange



5 MRT Stops
Central Business District

ALWAYS BE CLOSE TO WHERE THE ACTION IS

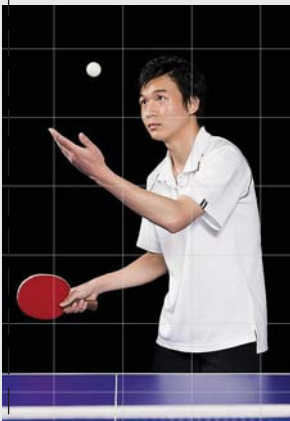
Sports fans will love the proximity of Guillemard Suites to the up and coming state-of-the-art Sports Hub. Here sports fans can catch all the exciting action of major sporting events, such as the prestigious year end WTA Championships where the top 8 women tennis players in the world will be competing within 1km of Guillemard Suites as well as supporting events such as concerts by world famous acts. Take an evening stroll along the waterfront, shop and dine at the 41,000 sq m of exciting retail, food and beverage outlets., experience a new lifestyle centre of Singapore.

Guillemard Suites also offers convenient connections to every part of Singapore for both drivers and those who prefer public transport. Aljunied MRT station is part of the East-West Line while Mountbatten MRT Station lies on the Circle Line which travels through Singapore's south-west, north-east and CBD. Drivers will also find it a breeze zipping around with three major expressways located nearby. Nicoll Highway, East Coast Parkway and the Kallang-Paya Lebar Expressway offer quick and easy access to every inch of the island so you can spend less time in traffic and more time having fun.

You will find reputable schools offering quality education within just a kilometre radius and, of course, some of the best dining Singapore has to offer is squirreled away in the east, with unrivalled choices for all levels from scrumptious hawker fare to exquisite fine dining.

Every aspect of life is catered for in the east and Guillemard Suites is your ideal base from which to explore them all.





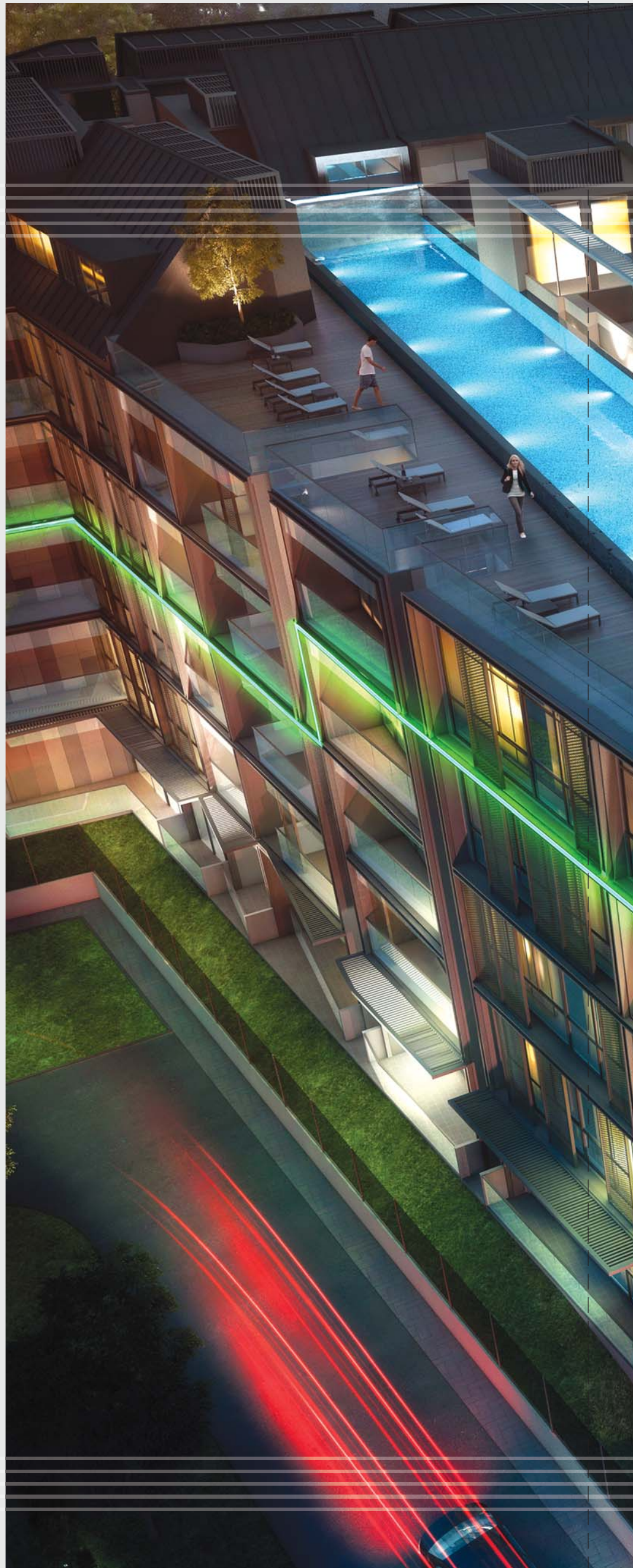




AMENITIES THAT ADD SPARKLE TO YOUR LIFE

Build everlasting memories with family and friends over a sizzling BBQ or spend unforgettable moments with the young ones at the wading pool.

Relax and unwind in the pool or working up a sweat in the gym. Staying home has never been so much fun when you live at Guillemard Suites.





NATURE AND DESIGN CONSPIRE TO BRING YOU TRUE BEAUTY





ARTIST'S IMPRESSION ONLY

The modern architecture of Guillemard Suites combines its natural surroundings with a truly inspirational layout that showers you with the best of form and function. Everywhere you look you will find lush scenery complemented with man-made constructions that envelope this development with an aura of peace and serenity. Look no further than Guillemard Suites for a home that will fill you with calm and peace of mind.

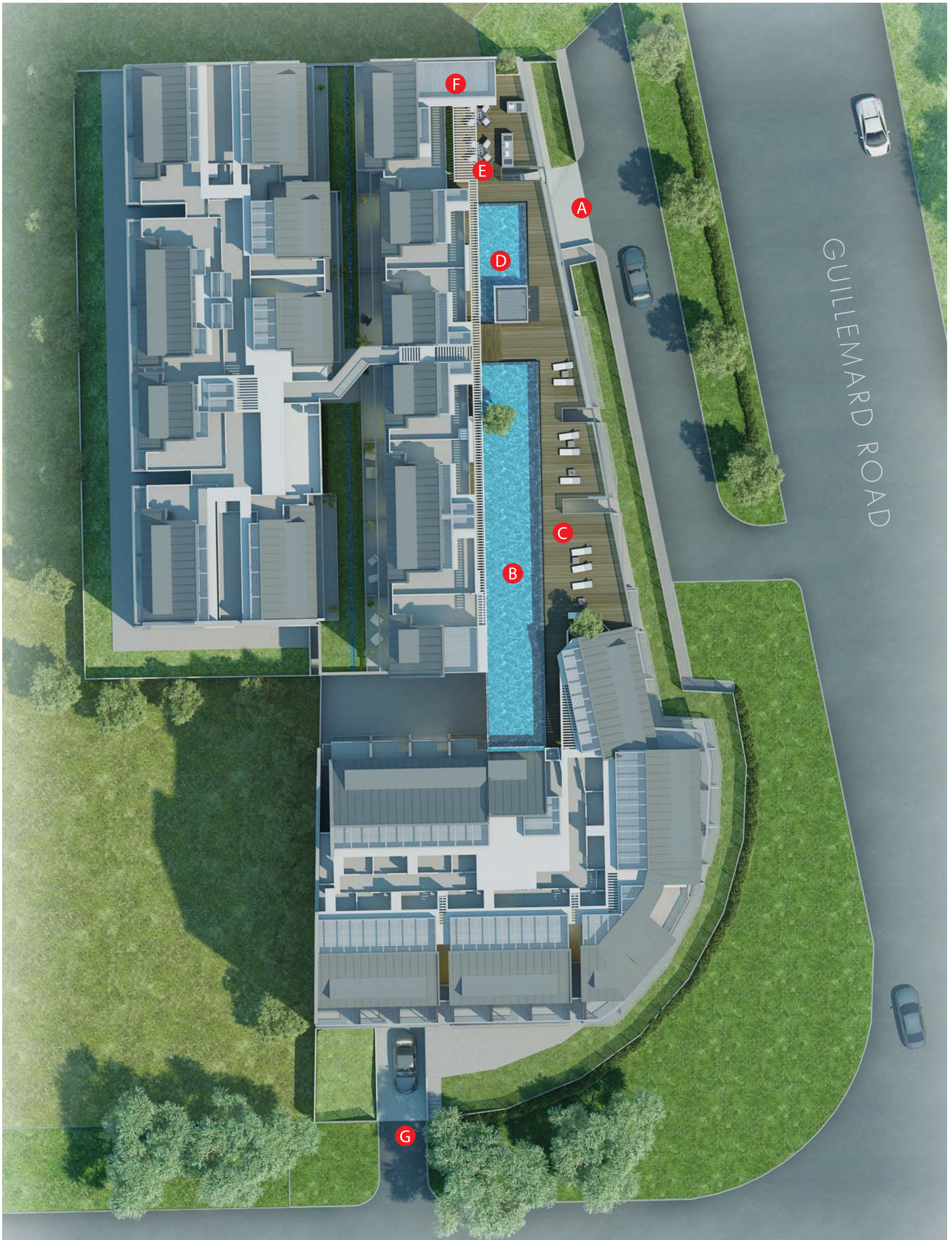


THE PERFECT SYNERGY OF MAN AND NATURE



ARTIST'S IMPRESSION ONLY

SITE PLAN



- A** VEHICULAR ENTRY
- B** POOL
- C** POOL DECK

- D** WADING POOL
- E** BBQ AREA
- F** GYM

- G** VEHICULAR EXIT





THE HEAVENLY EXPERIENCE EXTENDS WITHIN



ARTIST'S IMPRESSION ONLY



ARTIST'S IMPRESSION ONLY



ARTIST'S IMPRESSION ONLY



ARTIST'S IMPRESSION ONLY



The gorgeous design of Guillemard Suites is replicated in your lavish abode with well-appointed features and furnishings of the highest quality. You will never tire of enjoying your piece of heaven when you come home to Guillemard Suites.



LOFT LIVING

ARTIST'S IMPRESSION ONLY



ARTIST'S IMPRESSION ONLY



ARTIST'S IMPRESSION ONLY



ARTIST'S IMPRESSION ONLY



ARTIST'S IMPRESSION ONLY

THE HEAVENLY EXPERIENCE EXTENDS WITHIN



ARTIST'S IMPRESSION ONLY

Renowned brands adorn the rooms of your pad at Guillemard Suites to assure you of the most opulent lifestyle that you can imagine. Take pride in owning a home that oozes extravagance.

Only at Guillemard Suites.



 **BOSCH**
Invented for life



 **blum**



TOTO

DEVELOPER

MK25 Private Limited

54 TRAS STREET #03-02 SINGAPORE 078 993

BROCHURE DESIGN


amelia.mint@gmail.com

| | |
|-----------------------------------|--|
| Name of Project | Guillemard Suites |
| Address | 213 Guillemard Road Singapore 399 733 |
| Developer | MK25 Pte Ltd (UEN 201136059C) 54 TRAS STREET #03-02 SINGAPORE 078 993 |
| Developer License No | C1095 |
| Tenure of Land | Freehold |
| Lot / Mukim No | LOTS 01466M, 01467W, 01468V, 01469P, 01470W, 01471V, 03011W, 04078T, 05112K, 07259W [PREVIOUS LOTS: 03437L (PT) AND 97839V (PT)] MK25 AT 45 LORONG 22 GEYLANG/205, 207, 209, 211, 213 AND 215 GUILLEMARD ROAD (GEYLANG PLANNING AREA) |
| Building Plan No | A2180-00643-2012-BP01 Dated 3 Sep 13 |
| Expected Date of TOP | 31st Dec 2017 |
| Expected Date of Legal Completion | 31st Dec 2020 |

Whilst every reasonable care has been taken in preparing this brochure, the developer and its agents cannot be held responsible for any inaccuracies. All statements are believed to be correct but are not to be regarded as statements of representation of facts.

All information, specifications and statements herein shall not be treated to form part of an offer or contract. Floor plans are subject to amendments as may be required by the relevant authorities. Renderings and illustrations, not limited to landscape and furniture, are artist's impressions only and cannot be regarded as representations of fact. Floor areas are only approximate measurements and subject to final survey.

